

BIOMED TOOLS, ACCESSORIES AND SUPPLIES



30 WATT SOLDERING IRON

Pencil style soldering iron, UL listed, 30 watt, 110V.
Ideal for basic soldering tasks
Catalog No..... BIO00IR30

ECONOMICAL DIGITAL MULTIMETER

Performs AC/DC volts test, diode and transistor tests,
audible continuity tests and resistance measurements.
Includes test leads and instructions
Catalog No..... BIODT830D



REPLACEMENT TEST LEADS

Three feet long red and black test leads
Leads have banana connector and needle tip contacts
Catalog No..... BIOTSTLEA

JUMPER CABLE SET

Set includes five color coded jumper cables with alligator clips on both ends
Includes yellow, green, white, black and red jumpers
Jumpers are 12" long ea.
Catalog No..... BIO0HDTL5

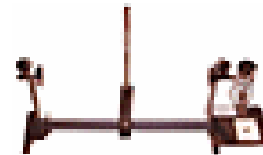


"HELPING HANDS" SOLDERING AID

Holds parts while you solder, includes
universal type joint and alligator clips .
Ideal for single person soldering tasks like connectors and other small parts
Catalog No..... BIOHELPHA

PC BOARD WORKSTATION

Holds board in place for soldering and assembling, rubber holders rotate
to allow work on both sides of board. Slides to accommodate most
boards. Includes soldering iron holder
Catalog No..... BIO900245



SOLDERING IRON STAND

Safely holds pencil style soldering iron
Base includes sponge for proper cleaning of soldering iron tip

Catalog No..... BIO00IR30

JEWELER'S LOUPE

Magnifies small parts 10X .
Ideal for reading component numbers on small diodes, capacitors, SMT
components and other small parts. Includes protective case.
Catalog No..... BIO00LNS5



BIOMED TOOLS, ACCESSORIES AND SUPPLIES



NEEDLE FILE SET

Set includes 10 small needle files (5½”) in plastic case shown.
Ideal for cleaning relay contacts and for removing dirt from connectors.
Catalog No..... BIO0FSET2

MULTIPLE OUTLET STRIP
Six outlet capacity, 15 Amp max current,
with on/off switch, circuit breaker and 6 ft cable.
Catalog No..... BIO0PW101



SINGLE OUTLET SURGE SUPPRESSOR

Full three line EMI/RFI filtering. 130V max, 1 nanosecond rise time, 150 joule,
double hit surge suppression with indicator light.
Catalog No..... BIO800329

WIRE STRIPPER

Stripper and cutting tool in one.
Will strip wire from 24 to 12 AWG. Tool is spring loaded with rubber handles.



Catalog No..... BIO0PW101



PRECISION SCREWDRIVER SET

Basic 6 piece precision screwdriver set.
Includes four 4- slotted (paleta) and two phillips (estria) screwdrivers.
Catalog No..... BIO00PSS6

PRECISION TWEEZER SET

Stainless steel precision tweezer set. Set includes five tweezers with
different tips for handling different small parts or other objects.
Tweezers are 4½” long. Storage pouch included. Not for surgical use.
Catalog No..... BIO000TW5



WIRE BRUSH SET

Set includes three industrial cleaning brushes.
Includes one each of brass, stainless steel and nylon bristles.
Catalog No..... BIO0WB772

TELESCOPING MAGNET

The ideal tool for retrieving small metal parts from hard to reach places.
Extends to maximum length of 23 inches.
Catalog No..... BIO0MAG31



BIOMED TOOLS, ACCESSORIES AND SUPPLIES



16 FEET MEASURING TAPE

One inch wide yellow tape with inch markings, 1/16 inch resolution.
Includes belt clip and locking slide switch.
Catalog No..... BIO900268

IC EXTRACTOR TOOL

Designed to extract DIP style ICs from sockets. Insulated.
One piece construction with no moving parts. Removes ICs with 8 to 24 pins
Catalog No..... BIO000EX1



WALL TRANSFORMERS

WE HAVE A COMPLETE INVENTORY OF
AC-TO-DC AND AC-TO-AC WALL TRANSFORMERS



*Just give our representative the following
specs of your original transformer :*

- Input Voltage
- Output Voltage
- Cable Length
- Output Voltage Type (AC or DC)
- Equipment Connector
- Polarity
- Amperage or mA rating

NYLON CARRY CASE

Black nylon cordura carry case originally designed for notebook computer.
Ideal for carrying tools, ekg simulators or other small instruments.
Measures: 12" (w) X 10" (H) X 1 1/2" (D)
Catalog No..... BIO501998



ALUMINUM ATTACHE TOOL CASE

Professional anodized aluminum tool case. Includes interior EVA foam lining
with adjustable compartments for parts or equipment. Removable tool pallet
holds 17 small hand tools. Top cover has document storage compartments.
Has lockable latches handle and nylon strap for shoulder carrying.
Catalog No..... BIO00TC03



PARTS STORAGE BOX

Plastic compartment box for storing small components, fuses etc.
Dividers can be moved to accommodate larger parts. 8.25" X 4.5" X 1.5"
Catalog No..... BIO000HB6



TEST CLIPS

Insulated heavy duty alligator clips with banana connections. Sold in sets of 2
Catalog No..... BIO00ALG7



ALLIGATOR CLIPS

Non-Insulated metal alligator clips. Sold in packs of 10.
Catalog No..... BIO00ALGM



BIOMED TOOLS, ACCESSORIES AND SUPPLIES



ELECTRICAL TAPE

PVC Vinyl coating electrical tape, 3/4 inch X 60 Ft. per roll.
Suitable for use up to 600V. UL listed. Sold in packs of 10 rolls.
Catalog No..... BIO500703

DESOLDERING WICK

Copper braid for removal of solder residues on boards and component pads.
Suitable for use with most soldering irons and rosin combinations. 5ft/roll
Catalog No..... BIO000SWK



60/40 SOLDER ROLLS

60/40 rosin core solder. 0.32 diameter Suitable for most soldering applications.
Sold in 1 pound roll

Catalog No..... BIOSOL031

VAC ENZIMATIC SOLUTION

Enzyme solution specially designed for cleaning of central vacuum system.
Dissolves protein and organic deposits from piping, connectors, traps and other
components of vacuum system. Sold in 1 gallon concentrate bottle.

Catalog No..... VAC302100



PART ASSORTMENTS AND KITS



HEATSHRINK ASSORTMENT

Assorted pieces in varied colors,
lengths and diameters (approx. 50 pieces)
Catalog No..... BIO00K156



KNOBS ASSORTMENT

Plastic volume type knobs in assorted colors
and stem sizes. (approx. 12 pieces)
Catalog No..... BIO00K190



NYLON SPACER ASSORTMENT

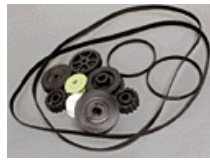
Nylon spacers, washers and hardware in
assorted colors and sizes.(approx. 500 pieces)
Catalog No..... BIO00K107



RELAYS ASSORTMENT

Assorted voltages and sizes.
(approx. 12 pieces)
Catalog No..... BIO00K190

PART ASSORTMENTS AND KITS



BELT & PULLEY ASSORTMENT

Plastic belt and pulley assortment for mechanical devices. (approx. 12 pieces)
Catalog No..... BIO00K207



TERMINAL ASSORTMENT

Assorted terminals for crimp-on application in various colors and sizes. (approx. 50 pieces)
Catalog No..... BIO00K116



HARDWARE ASSORTMENT

Big assortment of small screws, bolts, nuts and washers in assorted sizes. (approx. 1lb)
Catalog No..... BIO00K190



SAND BLOCK RESISTORS

Ceramic "sand block" resistor assortment in many values and wattages. (approx. 50 pieces)
Catalog No..... BIO00K189



FLAP WHEEL ASSORTMENT

Assorted flap wheels for buffing, polishing and sanding. (approx. 8 pieces)
Catalog No..... BIO00K296



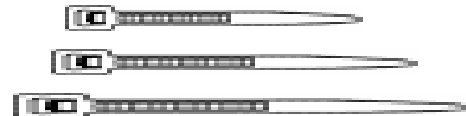
SPRING ASSORTEMENT

Assorted springs in different sizes. S-1/2lb/L-1lb
Large Springs Cat No..... BIO00K277
Small Springs Cat No.....BIO00K108



CAP/HOLE PLUG ASSORTMENT

Assorted plastic hole plugs and caps for chassis thru-holes, etc. (approx. 30 pieces)
Catalog No..... BIO00K280

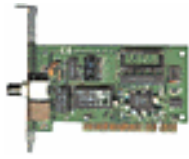


NYLON TIE ASSORTMENT

Nylon ties in various colors and lengths for cable bundles of up to 4 inches.(approx. 50 pcs).
Catalog No..... BIO00K300

ASK OUR SALES STAFF FOR INFORMATION ON OTHER ASSORTMENTS:
*RUBBER FEET, ELECTRICAL CONNECTORS, FUSE KITS, LIQUID CONNECTORS, IC SOCKETS
POTENTIOMETERS, CAPACITORS, THERMISTORS, MICRO SWITCHES,
LEDS, O-RINGS AND MANY OTHERS*

COMPUTER PARTS, ACCESSORIES AND SUPPLIES



PCI NETWORK COMBO CARD

10 BASE T/10 BASE 2 combo PCI card. Plug and Play with auto detect of 10 BASE T or 10 BASE 2 connection
Catalog No..... CMP225224

10-BASE-T CABLE

Data cable for network setup, RJ45 connectors, Category 3 UTP
Grey cable, 25 ft
Catalog No..... CMP301691



3 1/2" FLOPPY DRIVE

1.44 MB floppy drive for PC computers. Includes drivers and documentation.
Catalog No.....CMP203419

WINDOWS 95 KEYBOARD

105 key keyboard with Windows macro keys. Separate numeric keypad built in. Includes Standard 5 pin AT DIN type connector
Catalog No..... CMP203213



THREE BUTTON SERIAL MOUSE

Basic serial mouse, Microsoft compatible.
Connects to serial port with standard DB9 Connector
Catalog No..... CMP203505

30 WATT MULTIMEDIA SPEAKERS

Each 3-way multimedia speaker contains two midrange/woofer and one tweeter in vented grey colored cabinet. 30 watts total (15 watts per channel)
Mounting brackets are included. Extra output provided for optional sub-woofer. Speakers measure 10.75"HX2.9"WX8"D
Catalog No..... CMP200272



AT DIN TO PS2 ADAPTER CABLE

Allows use of AT 5 PIN male DIN peripherals like keyboard or Bar Code Scanner with newer computers using PS2 MINI DIN connectors
Catalog No..... CMP301706

PARALLEL PRINTER CABLE

Premium grade, bi-directional, printer cable for standard connection of laser, inkjet and dot matrix printers to PC computers and some medical devices
DB25 male to 36 pin Centronics male
Catalog No..... CMP300592 - Grey, 6FT



BIOMEDICAL MAINTENANCE AND SAFETY LABELS

BIOMEDICAL ENGINEERING DEPT.
SAFETY CHECKED

By _____
Date _____

INSPECTED
 SERVICED
 REPAIRED

By _____ Date _____

EQUIPMENT CHECKED

DATE _____ INITIAL _____
NEXT DUE _____

Biomedical Engineering Dept.
ELECTRICAL SAFETY TEST

Completed by _____
Date _____
Inspection Due _____

OUT OF SERVICE

STOP THIS ITEM IS NOT DISPOSABLE



BIOHAZARD

ATTENTION

THIS UNIT MUST STAY PLUGGED IN TO MAINTAIN BATTERY

DEFECTIVE DO NOT USE

DATE: _____
BY: _____

DO NOT REMOVE THIS LABEL

BIOHAZARD

BATTERY REPLACED

Date: _____ By _____
Date Due: _____
Biomedical Engineering Dept.

CENTRIFUGE PERFORMANCE TEST

| Setting | Cent. Tach. | Photo Tach. | |
|---------|-------------|-------------|-----|
| _____ | _____ | _____ | RPM |
| _____ | _____ | _____ | RPM |
| _____ | _____ | _____ | RPM |
| _____ | _____ | _____ | RPM |
| MAX | _____ | _____ | RPM |

Timer _____ Stopwatch _____
Date _____ By _____
Due _____ Control # _____

Calib. Photoelectric Tach.

Setting _____ R.P.M.
Date _____ By _____

DEFIBRILLATOR PERFORMANCE RECORD

| INDICATED ENERGY | CHARGE TIME | DELIVERED ENERGY |
|------------------|-------------|------------------|
| | | |
| | | |
| | | |
| | | |
| | | |
| | | |
| | | |
| | | |
| | | |
| | | |

INSPECTED BY: _____ DATE: _____
NEXT INSPECTION DUE _____

ELECTROSURGICAL OUTPUT TEST RESULTS

| DIAL SETTINGS | CUT | COAG | WATTS |
|---------------|-----|------|-------|
| | | | |
| | | | |
| | | | |
| | | | |
| | | | |
| | | | |
| | | | |
| | | | |
| | | | |
| | | | |

TESTED BY _____ DATE _____

WARNING

Absolutely no forms of mobile communications permitted near this device

PREVENTIVE MAINTENANCE INSPECTION

| DATE | INITIALS |
|------|----------|
| | |
| | |
| | |
| | |
| | |
| | |

RESULTS ON FILE IN BIOMEDICAL ENGINEERING DEPT.

PREVENTIVE MAINTENANCE/LEAKAGE TEST

Item _____
Model # _____
Serial # _____
Ref. # _____

| | P.M. | L.T. | | P.M. | L.T. |
|-------|------|------|-------|------|------|
| Jan. | | | July | | |
| Feb. | | | Aug. | | |
| March | | | Sept. | | |
| April | | | Oct. | | |
| May | | | Nov. | | |
| June | | | Dec. | | |

ULTRASOUND OUTPUT

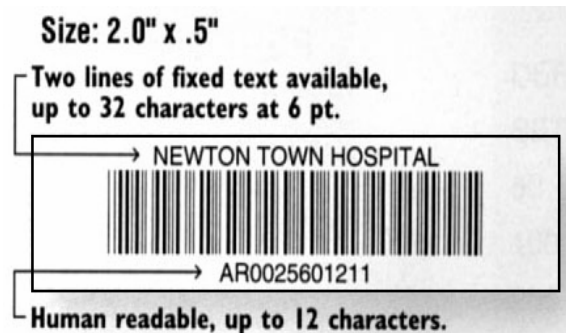
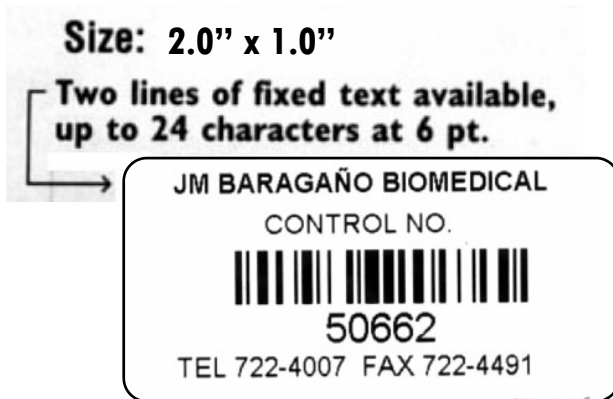
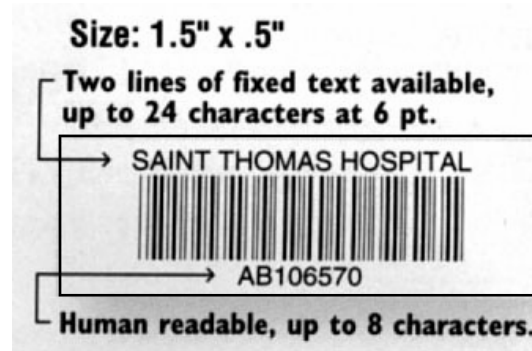
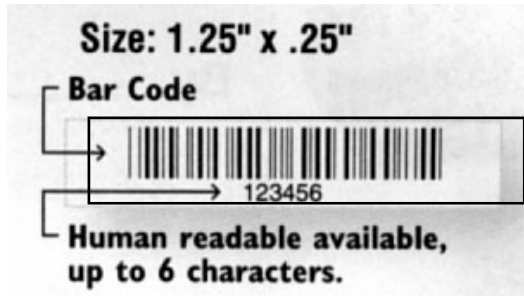
ID NO. _____ DATE _____
TESTED BY _____

| ULTRASOUND SETTING (WATTS) | ACTUAL OUTPUT (WATTS) |
|----------------------------|-----------------------|
| | |
| | |
| | |
| | |
| | |
| | |

BIOMEDICAL MAINTENANCE AND SAFETY LABELS

| Catalog No. | Fig. | Color | Size | Qty/Roll | Description |
|-------------|------|------------|---------------|----------|--|
| GSPE222BE | A | Fl. Green | 0.8" X 2.25" | 420 | "Biomedical Engineering Dept. Safety Checked" labels. |
| GSPE288BE | A | Fl. Yellow | 0.8" X 2.25" | 420 | "Biomedical Engineering Dept. Safety Checked" labels. |
| GSPE290BE | A | Fl. Pink | 0.8" X 2.25" | 420 | "Biomedical Engineering Dept. Safety Checked" labels. |
| GSPE289BE | A | Fl Orange | 0.8" X 2.25" | 420 | "Biomedical Engineering Dept. Safety Checked" labels. |
| GSPE217BE | B | Fl. Yellow | 0.8" X 2.25" | 420 | "Inspected/Serviced/Repaired" labels. |
| GSPE383BE | C | Fl. Green | 0.8" X 2.25" | 420 | "Equipment Checked" labels. |
| GSPE269BE | D | Fl. Green | 0.8" X 2.25" | 420 | "Biomedical Engineering Dept. Electrical Safety Test" |
| GSPE716BE | D | Fl Orange | 0.8" X 2.25" | 420 | "Biomedical Engineering Dept. Electrical Safety Test" |
| GSPE717BE | D | Fl. Yellow | 0.8" X 2.25" | 420 | "Biomedical Engineering Dept. Electrical Safety Test" |
| GSPE723BE | D | Fl. Pink | 0.8" X 2.25" | 420 | "Biomedical Engineering Dept. Electrical Safety Test" |
| GSPE746BE | D | Fl. Red | 0.8" X 2.25" | 420 | "Biomedical Engineering Dept. Electrical Safety Test" |
| GSPE747BE | D | Fl. Blue | 0.8" X 2.25" | 420 | "Biomedical Engineering Dept. Electrical Safety Test" |
| GSPE121BE | E | Fl. Red | 0.8" X 2.25" | 420 | "Out Of Service" labels. |
| GSPE748BE | F | Fl. Red | 0.8" X 2.25" | 420 | "Stop This Item Is Not Disposable" labels. |
| GSPE720BE | G | Fl. Yellow | 0.75" Dia. | 1,140 | Round "Biomedical Instrumentation Safety Checked" |
| GSPE721BE | G | Fl. Green | 0.75" Dia. | 1,140 | Round "Biomedical Instrumentation Safety Checked" |
| GSPE125BE | G | Lt. Blue | 0.75" Dia. | 1,140 | Round "Biomedical Instrumentation Safety Checked" |
| GSPE722BE | G | Fl. Red | 0.75" Dia. | 1,140 | Round "Biomedical Instrumentation Safety Checked" |
| GSPE743BE | G | Fl. Pink | 0.75" Dia. | 1,140 | Round "Biomedical Instrumentation Safety Checked" |
| GSPE744BE | G | Fl Orange | 0.75" Dia. | 1,140 | Round "Biomedical Instrumentation Safety Checked" |
| GSPE718BE | H | Fl Orange | 1" Dia. | 885 | Round "Biomedical Instrumentation Safety Checked" |
| GSPE719BE | H | Fl. Green | 1" Dia. | 885 | Round "Biomedical Instrumentation Safety Checked" |
| GSPE273BE | H | Yellow | 1" Dia. | 885 | Round "Biomedical Instrumentation Safety Checked" |
| GSPH210BE | I | Fl. Red | 0.8" X 2.25" | 420 | "Biohazard" labels. |
| GSPE307BE | J | Fl Orange | 1.75" X 2.4" | 400 | "Attention Unit Must Stay Plugged In To Maintain Battery" |
| GSPE702BE | K | Fl Orange | 0.75" X 2" | 470 | "Battery Replaced" labels. |
| GSPE203BE | L | Fl. Red | 2.5" X 2.5" | 390 | "Defective Do Not Use" labels. |
| GSPH229BE | M | Fl. Red | 3" X 3" | 320 | Large "Biohazard" labels. |
| GSPE305BE | N | Lt. Blue | 1.5" X 3" | 320 | "Centrifuge Performance Test" documentation labels. |
| GSPE267BE | O | Lt. Blue | 0.8" X 2.25" | 420 | "Calib. Photoelectric Tach." labels for centrifuge checks. |
| GSPE408BE | P | Lt. Blue | 2.5" X 2.5" | 390 | "Defibrillator Performance Record" labels. |
| GSPE423BE | Q | Yellow | 2.5" X 2.5" | 390 | "Electrosurgical Output Test Results" labels. |
| GSPE806BE | R | White | 1.25" X 3" | 100 | "Warning No Mobile Communications Permitted" labels. |
| GSPS407BE | S | Clear | 2.25" X 2.25" | 420 | Transparent Overlays to Protect Labels. Self Adhesive. |
| GSPS407BE | S | Clear | 3" X 3" | 320 | Transparent Overlays to Protect Labels. Self Adhesive. |
| GSPB428BE | T | Fl. Yellow | 2.5" X 2.5" | 390 | "Preventive Maintenance/Leakage" record labels. |
| GSPB428BE | U | White | 2.5" X 2.5" | 390 | "Ultrasound Output" record labels. |

CUSTOM PRINTED BAR CODE LABELS FOR BIOMEDICAL INVENTORY CONTROL



ASK OUR SALES STAFF ABOUT OUR CUSTOM BARCODE LABELS

WE CAN MAKE THE BARCODE LABEL THAT BEST SUITS YOUR INVENTORY NEEDS !!!

CUSTOM BARCODE LABELS ARE AVAILABLE IN STANDARD PAPER MATERIAL OR IN MORE DURABLE POLYESTER.

OUR LABELS INCLUDE INDUSTRY STANDARD CODE 39 BARCODE SYMBOLOGY

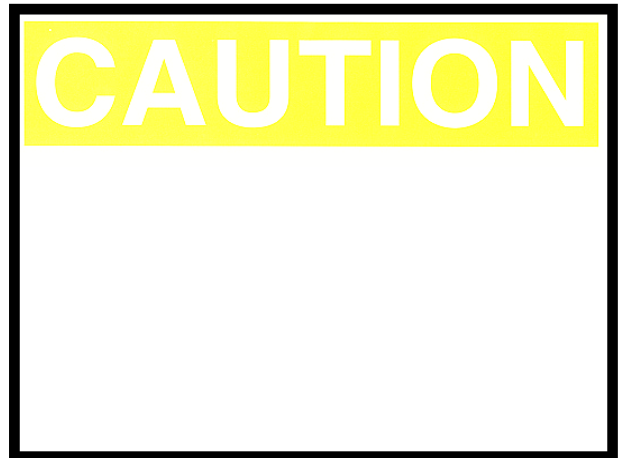
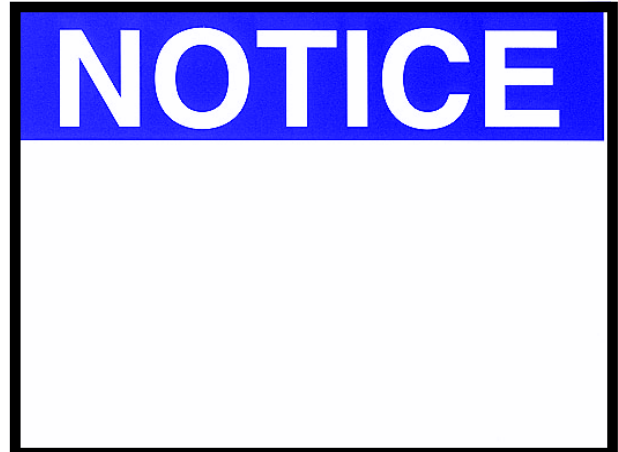
COPY AVAILABLE IN BLACK ONLY

MINIMUM ORDERS DEPEND ON LABEL SIZE.

ADDITIONAL SIZES ARE AVAILABLE ON A SPECIAL ORDER BASIS

PLEASE SPECIFY LABEL MATERIAL, TEXT, AND NUMBERING SEQUENCE WHEN ORDERING

BIOMEDICAL OSHA/ANSI SAFETY SIGNS



| Catalog No. | Size | Qty | Description |
|-------------|-----------|-----|---|
| GSP6564PL | 8½" X 11" | EA | WARNING Signs, orange background with black lettering, custom printed with your message in Spanish, English or French of up to 3 lines and laminated . |
| GSP6564PN | 8½" X 11" | EA | Warning Signs, orange/black custom printed with your message , up to 3 lines. |
| GSP006564 | 8½" X 11" | 25 | Warning Signs only, orange background/black lettering. |
| GSP6562PL | 8½" X 11" | EA | NOTICE Signs, white background with blue lettering, custom printed with your message in Spanish, English or French of up to 3 lines and laminated . |
| GSP6562PN | 8½" X 11" | EA | Notice Signs, white/blue custom printed with your message , up to 3 lines. |
| GSP006562 | 8½" X 11" | 25 | Notice Signs only, white background/blue lettering. |
| GSP6561PL | 8½" X 11" | EA | DANGER Signs, white backgnd with white on red lettering, custom printed with your message in Spanish, English or French of up to 3 lines and laminated . |
| GSP6561PN | 8½" X 11" | EA | Danger Signs, white/red custom printed with your message , up to 3 lines. |
| GSP006561 | 8½" X 11" | 25 | Danger Signs only, white background and white on red lettering. Black borders. |
| GSP6563PL | 8½" X 11" | EA | CAUTION Signs, yellow backgrnd / yellow on black lettering, custom printed with your message in Spanish, English or French of up to 3 lines and laminated . |
| GSP6563PN | 8½" X 11" | EA | Caution Signs, white/blue custom printed with your message , up to 3 lines. |
| GSP006563 | 8½" X 11" | 25 | Caution Signs only, yellow background with yellow on black lettering. |