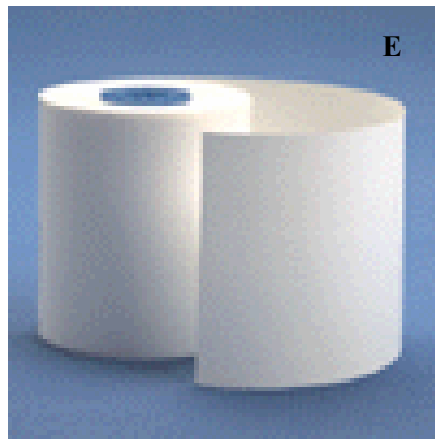
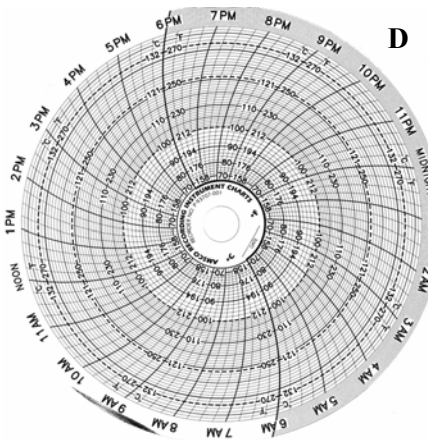
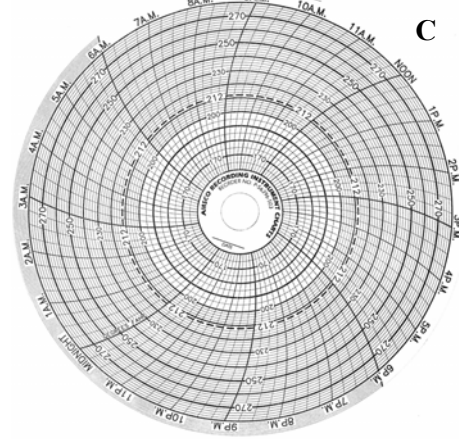
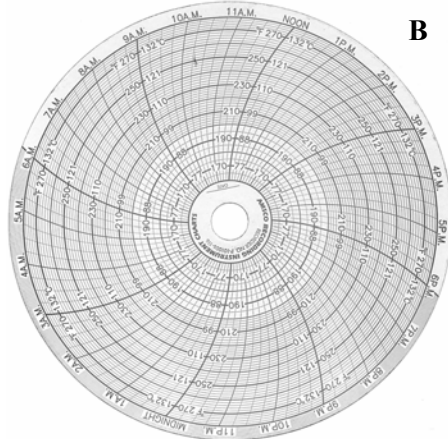
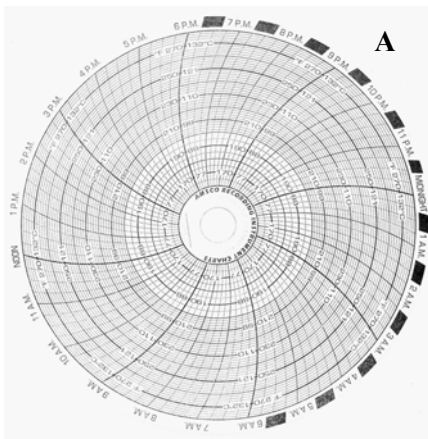


## STERILIZER CHART PAPER/SUPPLIES



CATALOG NO.	FIG	DESCRIPTION
PAP000374	A	AMSCO round chart paper for sterilizers with analog recorders with ink pen. 100 charts/box. Blue, 24 hr, °F and °C scales, 6 inch diameter.
PAP006116	B	AMSCO round chart paper for sterilizers with analog recorders with pressure type stylus (no ink). 50 charts/box. Blue, pressure sensitive, 24 hr, °F and °C scales, 6 inch diameter.
PAP396503	C	AMSCO round chart paper for sterilizers with analog recorders with ink pen. 100 charts/box. Grey, 24 hr, °F scale only 6 inch diameter .
PAP707001	D	AMSCO round chart paper for sterilizers with analog recorders with ink pen. 100 charts/box. Grey, 24 hr, °F and °C scales 6.25 inch diameter.
PAP362819	E	Printer paper for AMSCO Century, 3017, 3000SL Series, & System 2S impact printers 3R/Bx.
STEC27502	F	Liquid Descaler for steam generator cleaning. 1 Gallon.
STE160010	G	Printer Ribbon for Castle M/C 3500 series sterilizers. Blue ink.
STE315403	H	Red Pen and Arm Kit for AMSCO sterilizers with Bristol recorders. Includes metal arm, 4 pens.
STE315404	H	Blue Pen and Arm Kit for AMSCO sterilizers with Bristol recorders. Includes metal arm, 4 pens.
STE321742	H	Blue Pen set for AMSCO sterilizers with UE recorders. Includes, 4 fiber pens.
STE321741	H	Red Pen set for AMSCO sterilizers with UE recorders. Includes, 4 fiber pens.
STERPT113	H	Max register thermometer for Sterilization assurance. Glass mercury thermometer in metal protective shield. 5 1/2 inch long with 100°F to 300°F range.

## AMSCO EAGLE/MEDALLION PARTS



CATALOG NO	DESCRIPTION
STEAMG134	Chamber Pressure Gauge for Eagle and Medallion Series
STE730091	Jacket Pressure Gauge for Eagle and Medallion Series

CATALOG NO	DESCRIPTION
STE671091	Inline steam strainer 3/8" for Medallion & Eagle Series.



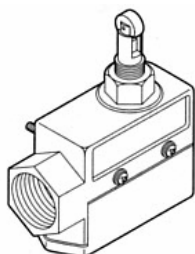
CATALOG NO	DESCRIPTION
STE319916	Heating element, 6500KW , 480V for sterilizers equipped with Chromalox steam generators.

CATALOG NO	DESCRIPTION
STE198006	Funnel and Cap assembly for steam drain, prevents condensation of steam around drain.



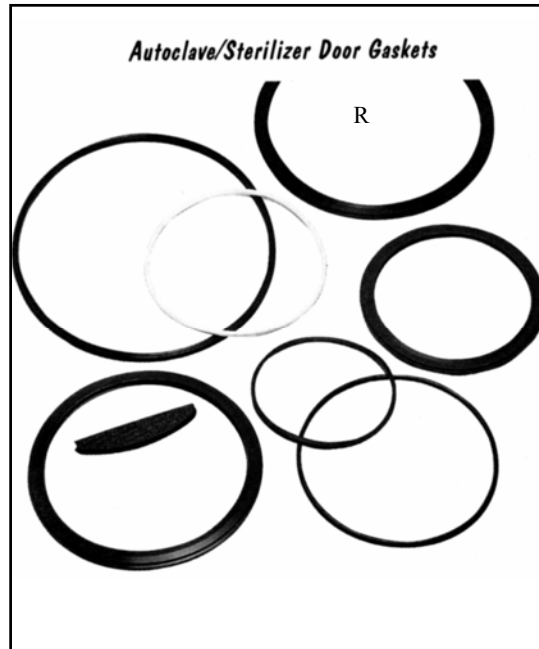
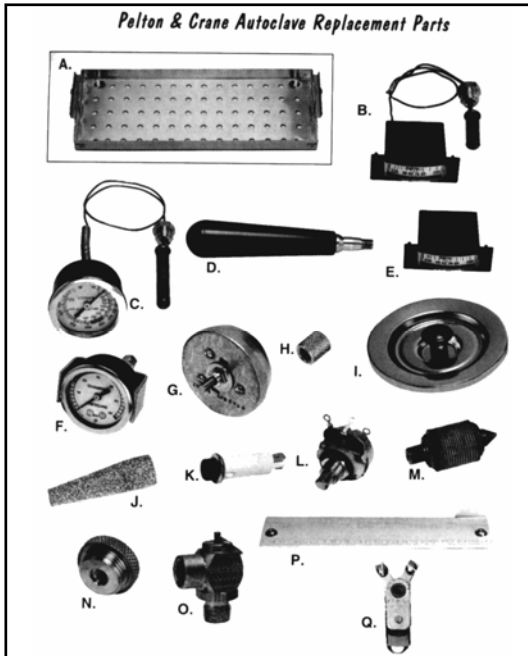
CATALOG NO	DESCRIPTION
NIBCD8100	Steam Control Valve Bellows Kit for Ascomatic, Eagle and Medallion Series Sterilizers

CATALOG NO	DESCRIPTION
STE240091	Steam trap diaphragm assembly with gasket Medallion and Eagle Series.



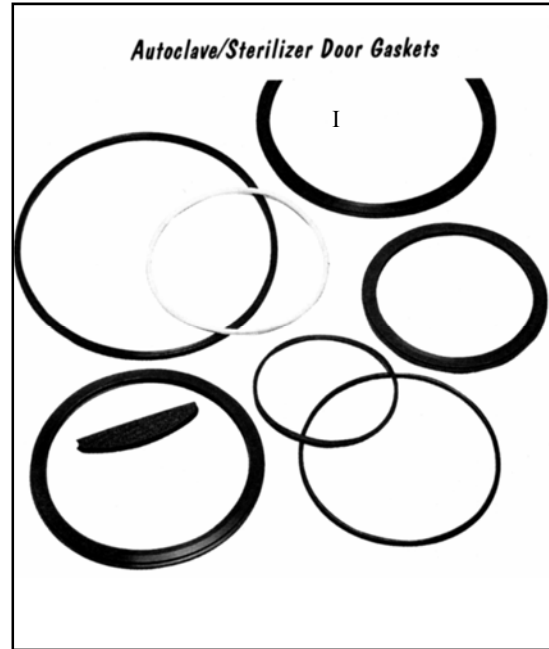
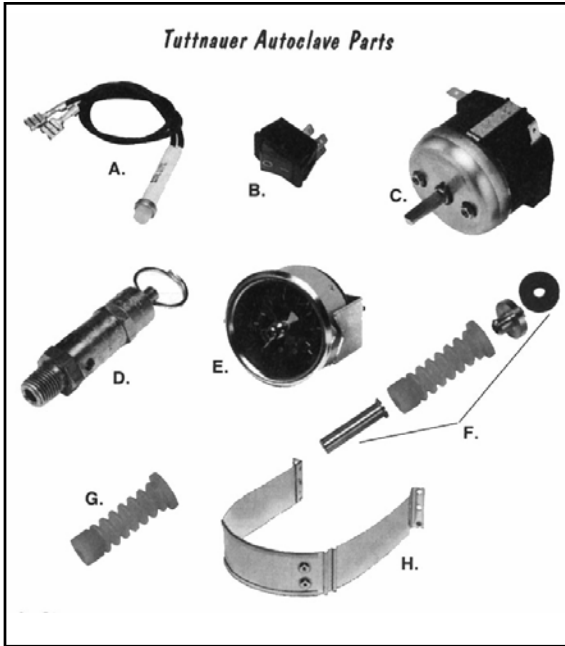
CATALOG NO	DESCRIPTION
STE752091	Door switch assembly for Medallion and Eagle Series

## PELTON & CRANE PARTS, GASKETS



CATALOG NO.	FIG	DESCRIPTION
STE00PA40	A	Stainless Steel Instrument Tray, 13"X 5" X 1" for OCM and Sentry models
STE00PA41	A	Stainless steel Instrument Tray, 13"X 6½" X 1" for OCM
STE00PA09	B	Temperature gauge kit for Sentry models
STE00PA06	C	Temperature gauge kit for OCM, OCR & OCR+ models
STE00PA17	D	Door Handle Assembly for OCM & OCR models
STE00PA08	E	Pressure gauge for Sentry models
STE00PA07	F	Pressure gauge for OCM, OCR & OCR+ models
STE00PA49	G	Bell Timer for OCM, OCR, Sentry & OCR+ models
STE00PA19	H	Drain Cap for OCM, OCR, Sentry & OCR+ models
STE00PA21	I	Reservoir Cap for OCM, OCR, Sentry & OCR+ models
STE00PA50	J	Fill Line Filter for OCM, OCR, OCR+, AE, AF, and Magnaclave models
STE00PA67	J	Reservoir Filter & O-Ring for OCM, OCR, OCR+, Sentry, Validator 8+, Validator 10+
STE00PA27	K	Red power light for OCM, OCR & OCR+ models
STE00PA28	K	Amber power light for OCM, OCR & OCR+ models
STE00PA12	L	Controller for OCM, OCR, Sentry & OCR+ models
STE00PA30	M	Bellows for OCM, OCR, OCR+, Sentry, Validator 8 & 10, Magnaclave, GN, HP, HP2,FL2
STE00PA31	N	Bellows Cap w/o- ring for OCM, OCR, OCR+, Sentry, Validator 8 & 10
STE00PA52	O	Pressure Relief Valve for OCM, OCR, Sentry & OCR+ models
STE00PA24	P	Heating Element for OCM & Sentry models
STE00PA23	P	Heating Element for OCR & OCR+ models
STE00PA02	Q	Overheat Thermostat for OCM, OCR, Sentry & OCR+ models
STE00DG14	R	Door Gasket for OCM, & GN, 7.5" internal diameter.
STE00DG15	R	Door Gasket for OCR, & OCR+, 91/8" internal diameter.

## TUTTNAUER PARTS, GASKETS



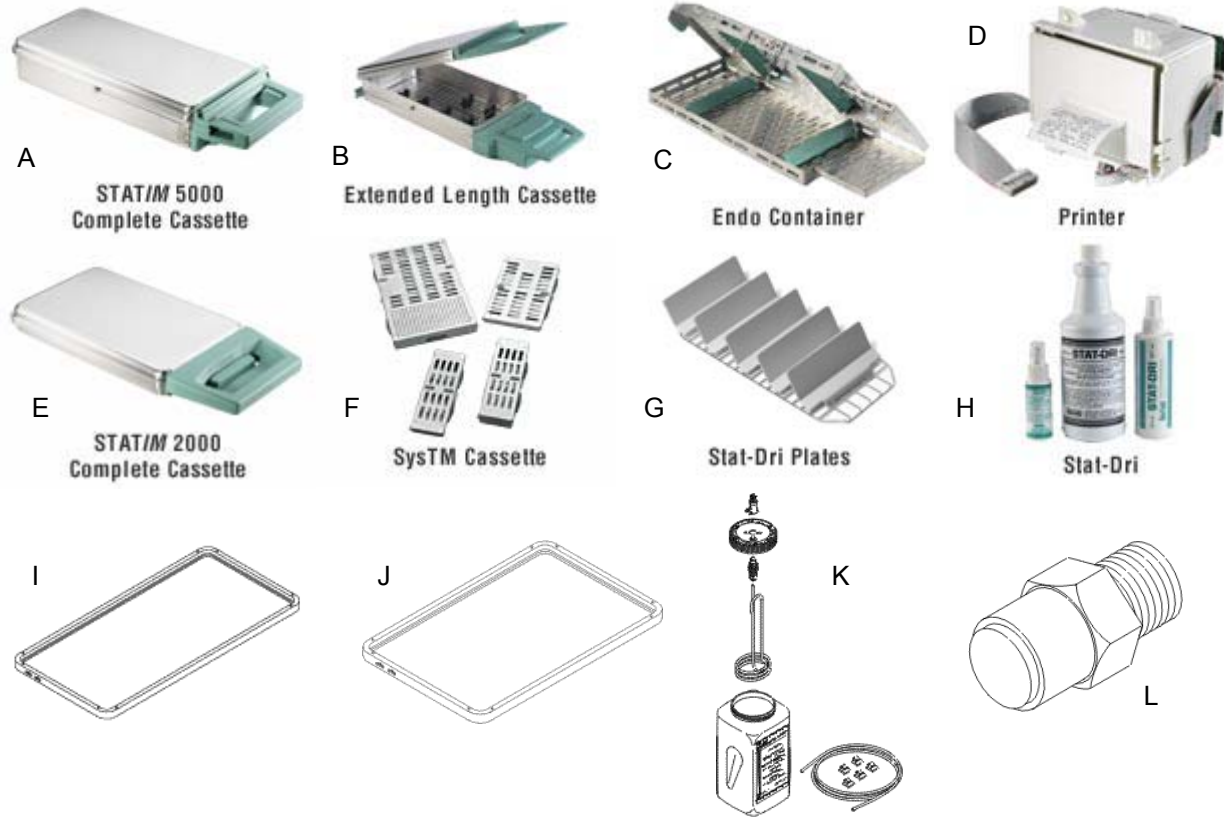
CATALOG NO.	FIG	DESCRIPTION
STE0RPK19	A	Signal Lights for Models: 1730M, 2540M & 2340M - Red, 125V 1/3 Watt
STE0RPK21	A	Signal Lights for Models: 1730M, 2540M & 2340M - Orange, 125V 1/3 Watt
STE0RPK21	A	Signal Lights for Models: 1730M, 2540M & 2340M - Green, 125V 1/3 Watt
STE00TU09	B	Power Switch for Models: 1730M & MK, 2340 M & MK, and 2540M & MK
STE00TU08	C	Timer, 60 minute for Models: 1730M & MK, 2340 M & MK, and 2540M & MK
STE00TU11	D	Safety Release Valve for Models: 1730M & MK, 1730E & EK, 2340 M & MK, 2340E & EK
STE00TU12	E	Pressure Gauge, 0-60 psi for Models: 2340 M & MK & 2540 M & MK
STE00TU30	F	Door Bellows Assembly Kit for Models All 1730, 2340 & 2540
STE00TU19	G	Door Bellows only for Models All 1730, 2340 & 2540
STE00TU04	H	Heater Element for Models 1730 E K & MK, ( requires 3) TIP: Check thermostat & solid state controllers working before changing
STE00TU27	H	Heater Element for Models 1730 E & M, ( requires 3) TIP: Check thermostat & solid state controllers working before changing
STE00TU05	H	Heater Element for Models 2340 E & M, ( requires 3) TIP: Check thermostat & solid state controllers working before changing
STE00TU06	H	Heater Element for Models 2540 E & M, ( requires 3) TIP: Check thermostat & solid state controllers working before changing
STE00DG05	I	Door Gasket for Tuttnauer 1730 Series, 6.5"
STE00DG06	I	Door Gasket for Tuttnauer 2340M. Serial Numbers 8805 or less, 8.5", maroon, "D" shape
STE0DG06N	I	Door Gasket for Tuttnauer 2340M. Serial Numbers 8806 or above, 9.5", green, Square
STE00DG05	I	Door Gasket for Tuttnauer 2540 Series, 10.5"

**ask our staff for all sterilizer parts not included in our catalog.**

**we have a full inventory of parts for:**

**AMSCO, Castle, MDT/Harvey, Tuttnauer, Ritter, Midmark, SciCan, Vernitron and others.**

# SCICAN STATIM PARTS & ACCESSORIES



CATALOG NO.	FIG	DESCRIPTION
STE01613S	A	Stainless Steel STATIM 5000 Complete Cassette
STE01618E	B	Stainless Steel STATIM 5000 Complete Extended Length Cassette
STE0161EC	C	Stainless Steel STATIM 5000 Endo Container
STE016PRN	D	Printer Assembly for STATIM 5000
STE00008A	E	Stainless Steel STATIM 2000 Complete Cassette
STESYSTEM1	F	STATIM 5000 Instrument Cassette, (holds 9)
STESYSTEM2	F	STATIM 5000 Instrument Cassette, Handpiece
STESYSTEM3	F	STATIM 5000 Instrument Cassette, (holds 14)
STESYSTEM4	F	STATIM 5000 Instrument Cassette, Full Length
STE103935	G	Stat-Dri Plates for STATIM 5000
STEOZ473T	H	Stat-Dri Liquid 8oz with Sprayer for use with all models
STE8OZ473	H	Stat-Dri Liquid 8oz refill for use with all models
STE2OZ473	H	Stat-Dri Liquid 32oz refill for use with all models
STE01649S	I	STATIM 5000 Cassette Seal and Lube Kit
STE00028S	J	STATIM 2000 Cassette Seal and Lube Kit
STESKC016	K	STATIM 5000 Condenser Waste Bottle Kit
STE06787S	L	Pressure Relief Valve 1/8" , 70PSI for use with STATIM 2000 & STATIM 5000

**STERILIZER PARTS/AUTOClaves**

# SCICAN STATIM STERILIZERS



**STATIM 2000**

The Statim 2000 is a reliable cassette sterilizer that's compact enough to fit in patient treatment areas and fast enough to sterilize expensive Lasik, PRK, endoscopic and cataract instruments, including phaco handpieces, between procedures - it can complete an unwrapped sterilization cycle in just six minutes and a wrapped cycle in 14 minutes.\*

The Statim 2000 is fully automatic. Simply select one of the three sterilization programs and with a single touch of the keypad, begin the cycle. An advanced microprocessor controls all functions and maintains optimal sterilization conditions, from start to finish.

SciCan's Statim cassette sterilizers have a biological effectiveness that has been proven in tests for hollow and solid instruments at many internationally recognized institutes in Canada, the United States and Europe.

Larger than the 2000, the Statim 5000 has an additional sterilization cycle and a roomier cassette designed to process bulkier instruments and greater loads. It's a reliable cassette sterilizer that's compact enough to fit in patient treatment areas and fast enough to sterilize expensive Lasik, PRK, endoscopic and cataract instruments, including phaco handpieces, between procedures - it can complete an unwrapped sterilization cycle in just nine minutes and a wrapped cycle in just 17.5 minutes.\*

The Statim 5000 is fully automatic. Simply select one of four sterilization programs and with a single touch of the keypad, begin the cycle. An advanced microprocessor controls all functions and maintains optimal sterilization conditions, from start to finish.

SciCan's Statim cassette sterilizers have a biological effectiveness that has been proven in tests for hollow and solid instruments at many internationally recognized institutes in Canada, the United States and Europe.



**STATIM 5000**



**QUANTIM 16**

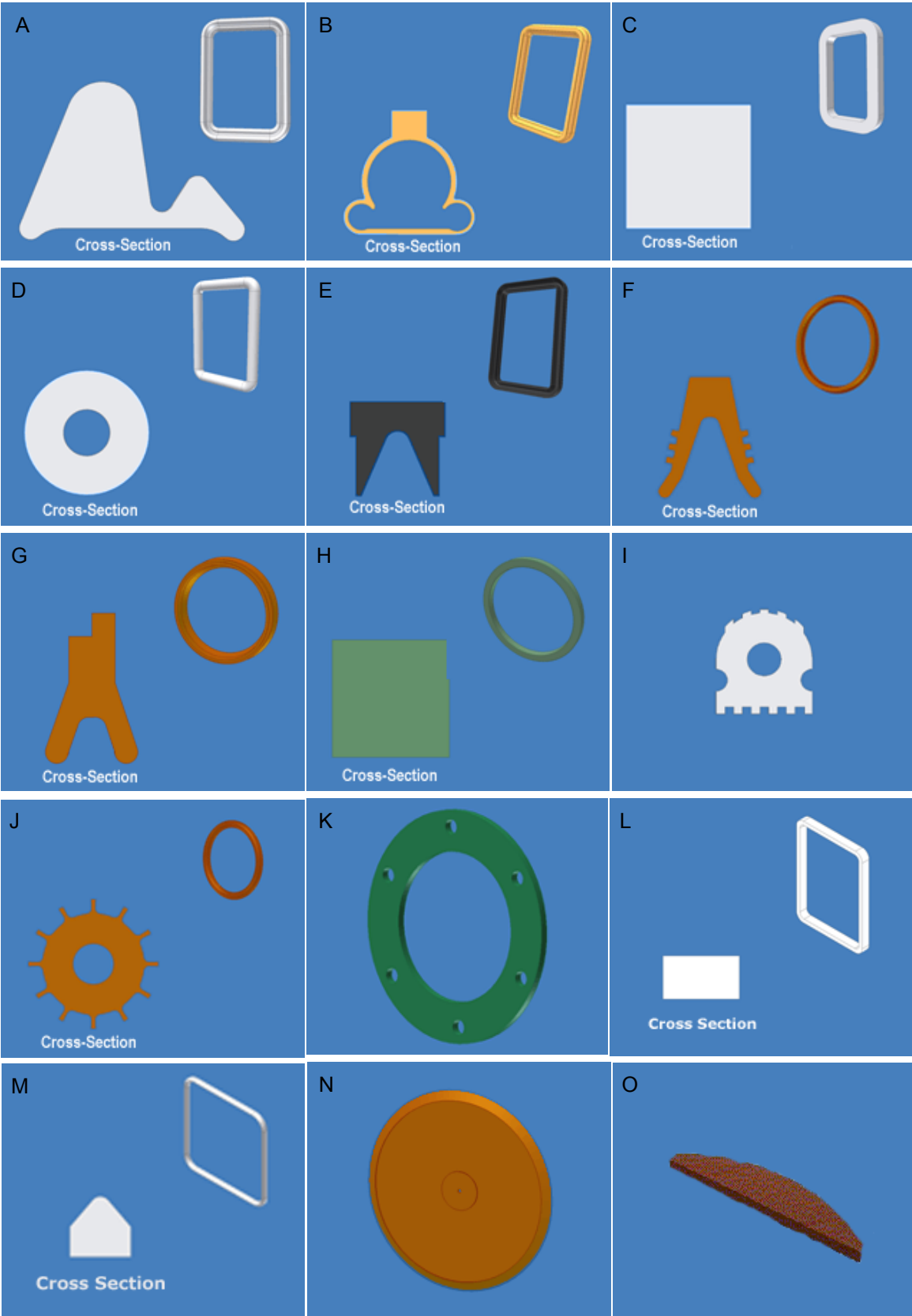
When a large number of instruments and handpieces need to be sterilized, the Quantim 16 delivers dry, sterile instruments effectively and quickly. It's the ideal larger partner for the more compact Statim series of autoclaves, the fastest autoclaves from start to sterile.

The Quantim 16 Autoclave is designed to address all volume and wrapped sterilization needs. Its large, seamless chamber is 10" in diameter and 13" deep, and holds up to six open instrument trays, three industry standard Hu-Friedy® 8" x 11" instrument cassettes, a pouched instrument rack, or various SciCan SysTM™ instrument cassettes.

With features like its unique safety door, specially designed to open with the touch of a button, its microprocessor-controlled cycle times and temperatures and its front fill and drain capabilities for fast draining of the reservoir when needed, the Quantim 16 is a model of efficient, capable design.

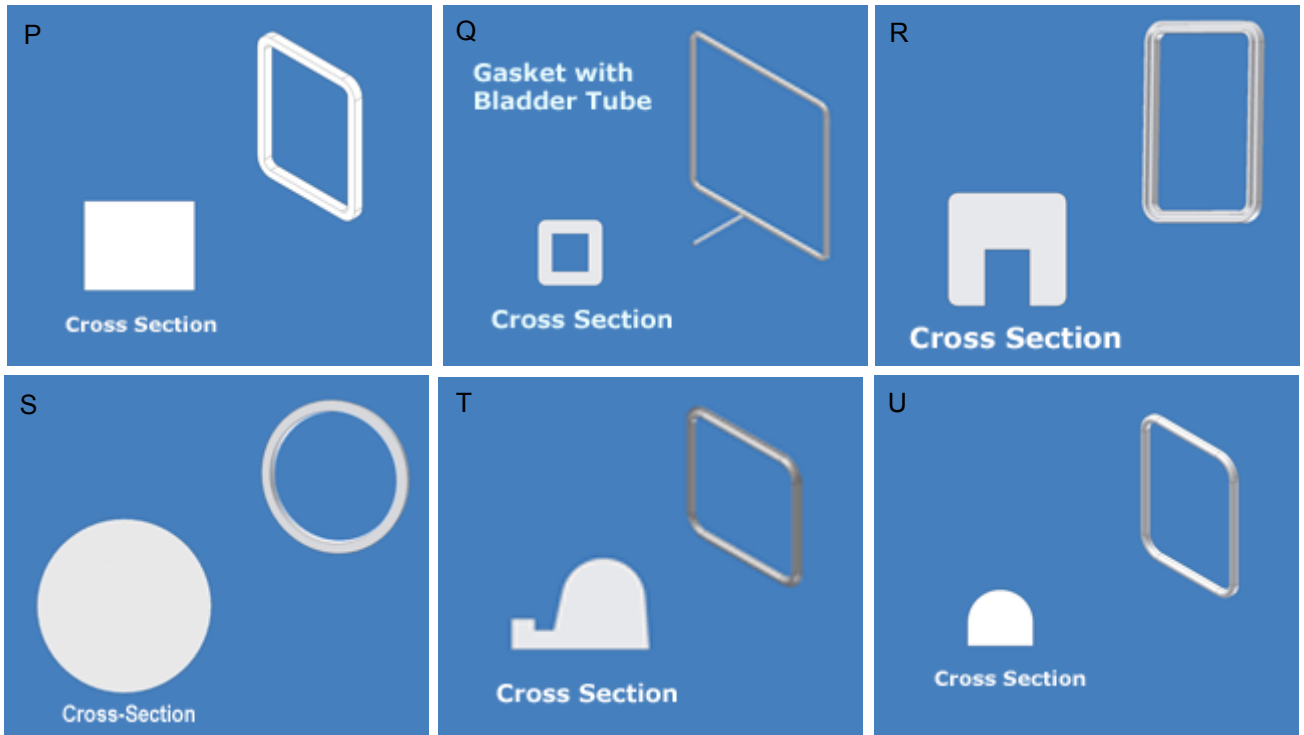
**Ask our staff for the best sterilizer or autoclave for your needs. we can offer full line of equipment and parts and accessories for all your sterilizing needs, **STERIS, AMSCO, MDT/Harvey, TUTTNAUER, RITTER, MIDMARK, SCICAN, PRIMUS, CONSOLIDATED STILLS, GETTINGE CASTLE, PELTON & CRANE, and others.****

# STERILIZER GASKETS



**STERILIZER PARTS/AUTOClaves**

## STERILIZER GASKETS



## AMSCO GASKETS

SIZE	PROFILE	OEM#	JMB#	FIGURE
9" x 9"	Square	P754875-091	STE001390	NA
10-1/4" OD	T-type	P146653-007	STE001393	NA
11" OD	Rectangle	P074374-091	STE001391	NA
11" OD	Y-type	P426637-261	STE001392	G
12" x 16"	Square	P074366-091	STE001388	NA
16" x 16"	Square	P074367-091	STE001348	C
16" x 16"	U-type (Viton)	P146660-159	STE001362	E
20" OD	Square	P074370-091	STE001389	NA
20" x 20"	Square	P078767-091	STE001349	C
20" x 20"	U-type (Viton)	P146660-160	STE001364	E
24" x 24"	Square	P074376-091	STE001386	C
24" x 36"	P-type	P097487-091	STE001317	A
24" x 36"	Square	P074377-091	STE001385	C
24" x 36"	P-type	P075006-091	STE001387	A
36" x 42"	P-type	P311636-091	STE001318	A
48" x 54"	P-type	P055678-091	STE001319	A
48" x 66"	P-type	P333749-091	STE001320	A
48" x 84"	P-type	P331996-091	STE001321	A
62" x 84"	P-type	P331008-091	STE001322	A

## PRIMUS GASKETS

SIZE	PROFILE	OEM#	JMB#	FIGURE
13" x 13"	Round	800238	STE001492	D
16" x 16"	Round	800056	STE001490	D
20" x 20"	Round	800057	STE001487	D
24" x 36"	Round	800313	STE001481	D
26" x 26"	Round	800058	STE001488	D
26" x 36"	Round	800114	STE001480	D
26" x 36"	Round	800196	STE001590	D
26" x 63"	Round	800062	STE001591	D
26" x 63"	Round	800142	STE001485	D
32" X 36"	Round	800115	STE001476	D
32" X 36"	Round	800212	STE001592	D
33" x 72"	Round	800187	STE001477	D
35" x 57"	Round	800141	STE001478	D
35" x 86"	Round	800414	STE001491	D
36" x 42"	Round	800081	STE001489	D
36" x 42"	Round	800210	STE001593	D
36" x 63"	Round	800413	STE001479	D
39" x 89"	Round	800415	STE001484	D
49" x 57"	Round	800232	STE001493	D
49" x 63"	Round	800312	STE001483	D
49" x 86"	Round	800063	STE001486	D
54" x 84"	Round	800204	STE001482	D
16" x 16"	Round	800611	STE002721	D
20" x 20"	Round	800612	STE002722	D
26" x 26"	Round	800584	STE002723	D

## GETINGE GASKETS

SIZE	PROFILE	OEM#	JMB#	FIGURE
16" x 16"	Round	Doors0020	STE001354	D
20" x 20"	Round	Doors0018	STE001363	D
26" x 26"	Round	Doors0003	STE001356	D
26" x 36"	Round	Doors0004	STE001357	D
49" x 57"	Round	Doors0019	STE001358	D
49" x 86"	Round	Doors0011	STE001500	D
61" x 86"	Round	Doors0015	STE001359	D

## MIDMARK GASKETS

SIZE	PROFILE	OEM#	JMB#	FIGURE
7-1/2" OD	Rectangle	H98134	STE001409	S
7-1/2" OD	Round	33166	STE001407	D
10-3/4" OD	V-type	053-0366-00	STE001413	F
12-7/8" OD	V-type	053-0527-00	STE001411	F

## CASTLE GASKETS

SIZE	PROFILE	OEM#	JMB#	FIGURE
16" OD	Square	44599	STE001394	NA
16" OD	Square	29721	STE001408	J
16" x 16"	Round	58397	STE001350	D
16" x 16"	Square	44600	STE001395	NA
20" OD	Square	29725	STE001396	NA
20" x 20"	Round	58398	STE001351	D
20" x 20"	Square	44602	STE001397	NA
24" x 36"	Round	40441	STE001352	D
24" x 36"	D-type	60864	STE001401	I
24" x 36"	Round	536651	STE001558	D
24" x 62"	D-type	60866	STE001402	I
26" x 36"	Round	61301600108	STE001398	D
36" x 42"	Round	N/A	STE001399	D
16" x 16"	U-type	513966	STE001776	R
20" x 20"	U-type	513967	STE001777	R

## PELTON & CRANE GASKETS

SIZE	PROFILE	OEM#	JMB#	FIGURE
6-1/2" OD	Round	2122	STE001375	NA
7" OD	Round	1187	STE001376	NA
8-1/4" OD	Y-type	4014	STE001377	G
8-1/4" OD	Round	2195	STE001381	S
9-1/4" OD	Square	3049	STE001380	NA
9-7/8" OD	V-type	1539241	STE001368	F
10-1/4" OD	Y-type	4341	STE001378	G
11-5/16" OD	V-type	1539407	STE001369	F
16-1/2" OD	Round	4497	STE001379	NA

## VERNITRON GASKETS

SIZE	PROFILE	OEM#	JMB#	FIGURE
6" OD	Square	205181	STE001698	C
10-7/8" OD	Rectangle	201708	STE001698	L
10-7/8" OD	Rectangle	103085	STE001700	L
16" x 16"	Square	101007553	STE001738	NA
20" x 20"	Square	101007551	STE001739	NA
24" x 36"	P-type	N/A	STE001740	A

## SPECTROLINE GASKETS

SIZE	PROFILE	OEM#	JMB#	FIGURE
7-1/2" OD	Round	P77117-111	STE001702	S
7-1/2" OD	Round	H98134 & 33166	STE001703	S
7-1/2" OD	Round	P77117-111	STE001704	S

## TUTTNAUER GASKETS

SIZE	PROFILE	OEM#	JMB#	FIGURE
7-3/8" OD	Round	2610020	STE001382	H
9-1/2" OD	Round	2610118	STE001383	H
9-1/2" OD	Round	2610005	STE001425	NA
10.590 OD	Round	2610023	STE001384	H
16" x 16"	D-type	GAS440-001	STE001572	U
20" x 20"	D-type	GAS550-001	STE001573	U
20"x 20"	Round	GAS081-0002	STE001575	S
24" x 36"	Round	GAS081-0005	STE001574	S
16" x 16"	V-type	GAS440-0001	STE002247	NA
20"x 20"	V-type	GAS550-0001	STE001866	NA
24" x 36"	p-type	GAS080-0016	STE002011	NA

## MDT HARVEY GASKETS

SIZE	PROFILE	OEM#	JMB#	FIGURE
5" OD	Round	204004801	STE001406	NA
6-1/2" OD	Round	250007801	STE001403	NA
8-1/2" OD	Round	280000301	STE001404	NA
11" OD	Round	260006701	STE001405	NA

## RITTER GASKETS

SIZE	PROFILE	OEM#	JMB#	FIGURE
7" OD	Round	3036	STE001416	NA
9-1/4" OD	Square	3049	STE001750	NA
9-3/4" OD	Square	11540	STE001415	NA

## PHARMETICS GASKETS

SIZE	PROFILE	OEM#	JMB#	FIGURE
16" x 16"	V-type	N/A	STE001579	M
20" x 20"	V-type	97500	STE001706	M
24" x 36"	p-type	97505	STE001707	T

## CONSOLIDATED GASKETS

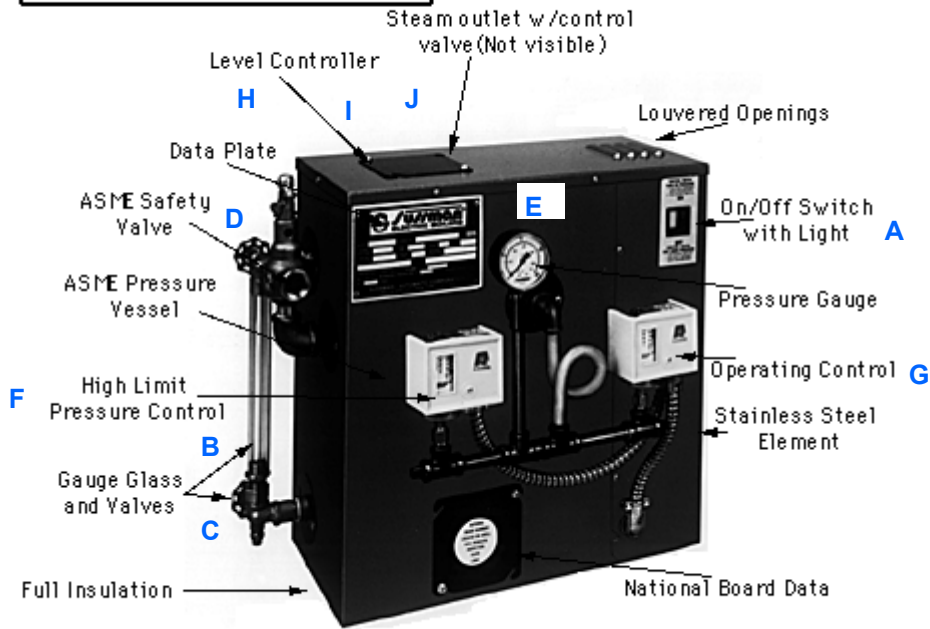
SIZE	PROFILE	OEM#	JMB#	FIGURE
20" x 20"	Rectangle	N/A	STE001576	P
24" x 36"	Rectangle	N/A	STE001577	L

## BARNSTEAD GASKET

SIZE	PROFILE	OEM#	JMB#	FIGURE
NA	Round/Flat	2-513005	STE002733	N

## SUSSMAN STEAM GENERATORS AND PARTS

LBS / HR SAT. STEAM	9 TO 60
KW RATING	3 TO 20
PSIG RANGE	0 TO 90



COMPLETE WITH WATER FEED, WATER STRAINER/SOLENOID/CHECK VALVE REPRESENTATIVE OF ALL MBA MODELS

PART NO	DESCRIPTION	FIGURE
90229	SPARK PLUG	NA
92830	ON-OFF SWITCH WITH PILOT LIGHT	A
99042	WATER SOLENOID 1/4" 120V	NA
99042C	WATER SOLENOID 1/4" 240V	NA
99080-1	9-7/8" GAUGE GLASS WITH (2) O-RINGS	B
99173C	GAUGE VALVE SET	C
99136	SAFETY VALVE 100 PSI, 1/2" NPT	D
99197	PRESSURE GAUGE 160 PSI, 2-1/2" NPT	E
99130R	PRESSURE CONTROL HI-LIMIT W/RESET BUTTON 0-90 PSI	F
99128R	PRESSURE CONTROL OPERATING 0-90 PSI	G
100706	8 AMP FUSE	NA
99807F	1/4" PROBE ROD 5-INCH	H
99075	CONTACTOR 60 AMP 3 POLE, 120V	NA
99007	CONTACTOR 60 AMP 3 POLE, 240V	NA
100412A	LIQUID LEVEL CONTROL BOARD, 120V	I
100412C	LIQUID LEVEL CONTROL BOARD, 240V	I
100378	PROBE ISOLATOR	J
103540	BOILER GASKET KIT 99096, 99547B, 99088 GASKET, BOLTS & COMPOUND	NA
39181B	HEATING ELEMENT 18KW - 208 SINGLE PHASE	NA
39181C	HEATING ELEMENT 18KW - 240 SINGLE PHASE	NA